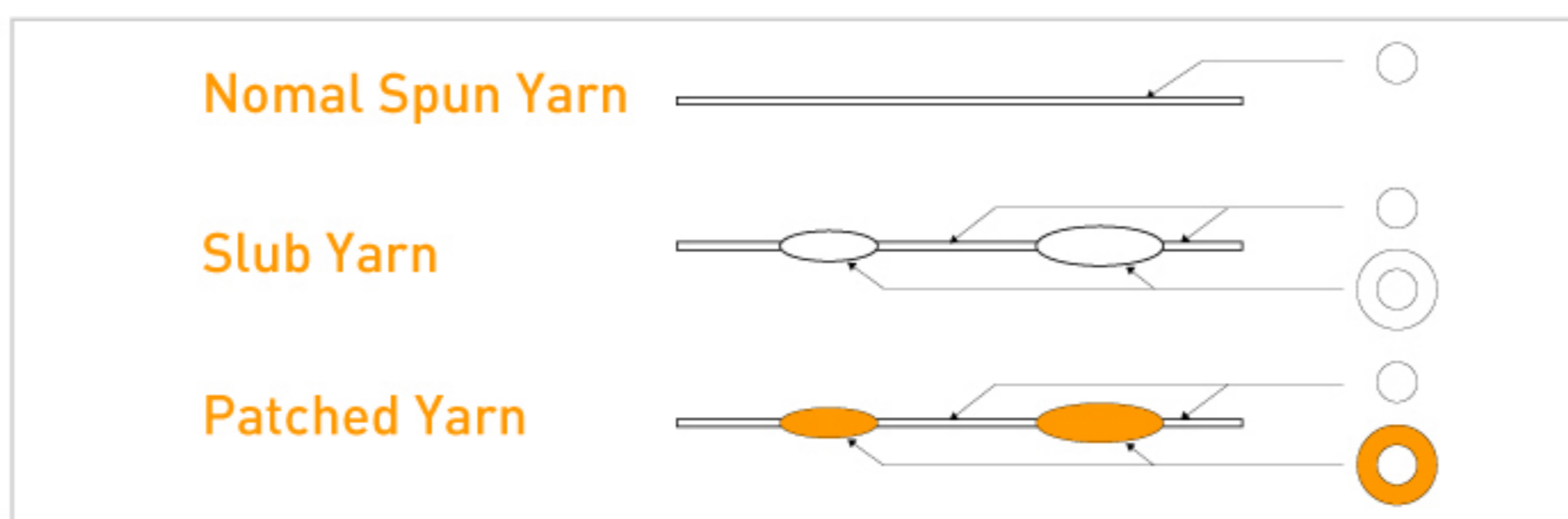


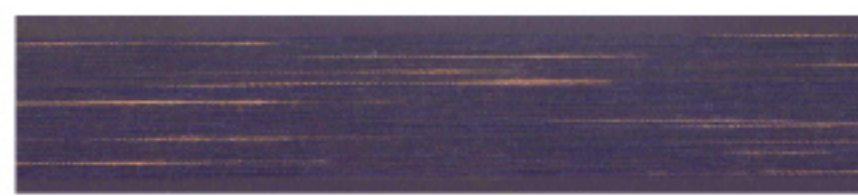
Patched Yarn

1. The Concept of Patched Yarn

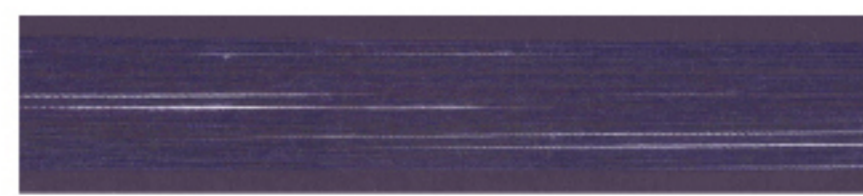
- The basic part of fibers are covered with different kinds of fibers periodically along the lengthwise direction of single yarn.



2. Patched Yarn (Ne 30)



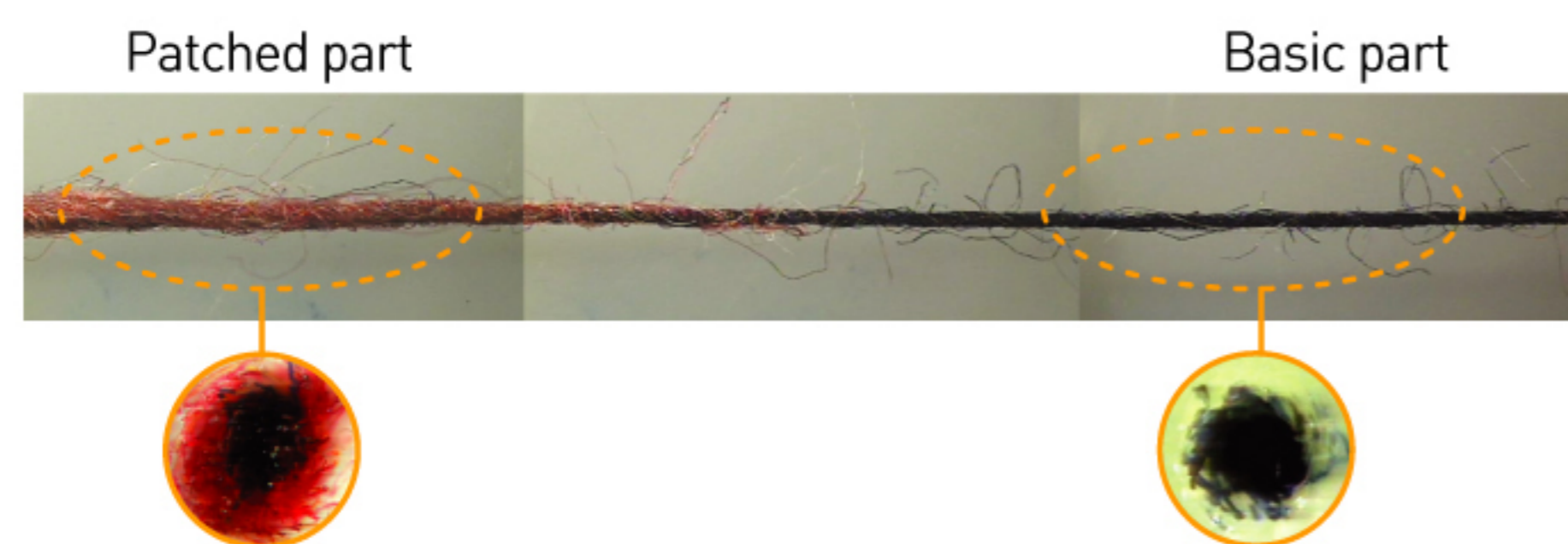
Cotton / Cotton (50/50)



Cotton / Lyocell (50/50)

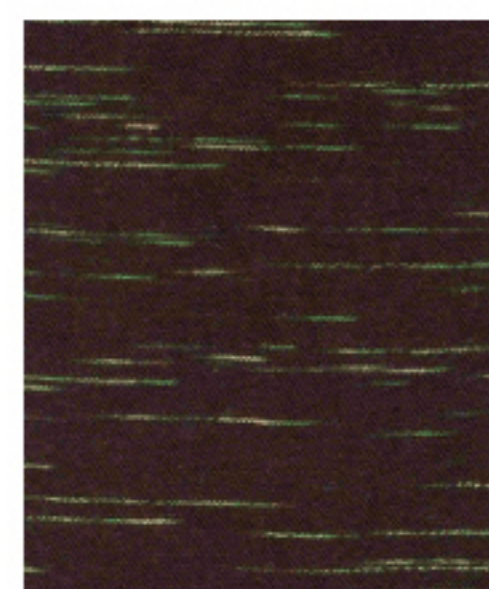
3. Photographs

- Cotton(Ba) / Cotton(Pa)



4. The Product of Patched Yarn

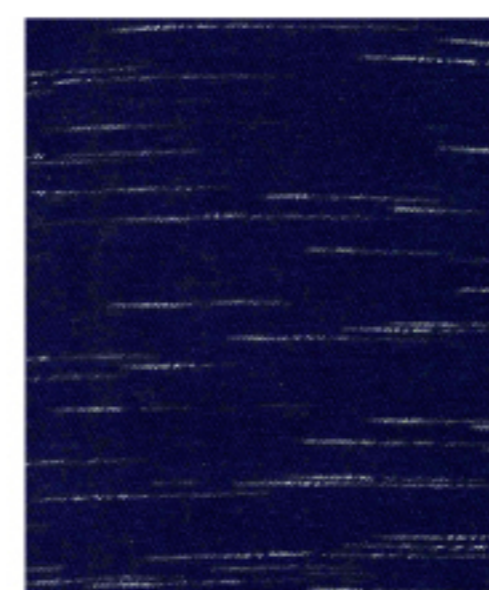
- Technology transfer to Kyungbang co., ltd.
- Samples of various knitted fabric



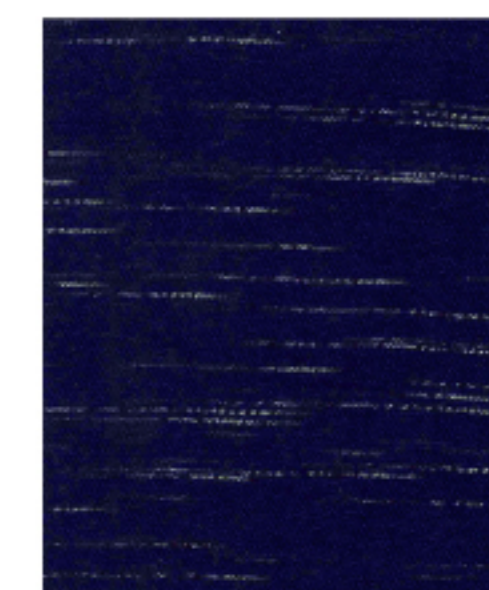
Cotton(Ba : Khaki) /
Cotton(Pa : Beige) /
Cotton(Pa : Green)



Cotton(Ba : Beige) /
Lyocell(Pa : Blue) /
Lyocell(Pa : Green)



Cotton(Ba) /
PET(Pa)



Cotton(Ba) /
PET(Pa) /
Lyocell(Pa)